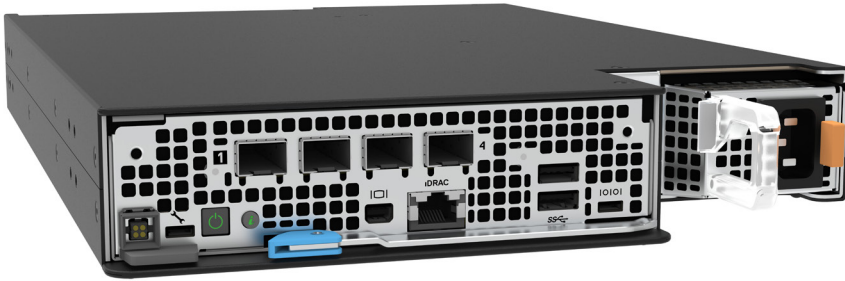


COMPACT CHASSIS / HIGH-PERFORMANCE
/ BUILT FOR THE EDGE / PLUG AND PLAY
STANDARD DELL COMPUTE SLEDS



Tracewell T-XR4000-1P (single slot 'mini' chassis)

BASED ON: The new Dell Technologies PowerEdge XR4000 is the company's shortest depth server to date. Built to withstand challenging environments at the edge, the XR4000 offers high-performance computing in a unique "chassis and compute sled" architecture and a 14" form factor, making it the optimal mix of power and size.

USE CASE: Tracewell Systems XR4000 Extensions make it possible to do more with Dell Technologies. The Tracewell T-XR4000-1P is ideal for customers who want a high-performance, on-the-go compute platform optimized for the edge. Standard Dell compute sleds insert into the "mini" chassis (it is "pluggable") making it the perfect platform for customers that want to extend their Dell XR4000-based applications on a common hardware footprint across their data center and edge operations.

Benefits

DELL TECHNOLOGIES

The new Dell PowerEdge XR4000 is purpose built to deliver high-performance computing in edge environments. The multi-node server comes in 1U or 2U form factors and a chassis and sled architecture perfect for retail, manufacturing, telecommunications and defense organizations.

TRACEWELL PLATFORMS

All of the benefits of the Dell PowerEdge XR4000 in a compact ('mini') one-slot chassis that makes it possible to plug in standard Dell compute sleds. Portable chassis delivers a high-performance platform for commercial, OEM and defense organizations.

DELL+ TRACEWELL

Electrically identical to standard Dell PowerEdge products. "Plug and play" components between Dell PowerEdge products and Tracewell platforms. Order through Dell (Dell PowerEdge part number) and eligible for Dell PowerEdge warranty, service, support and secure supply chain.



SYSTEM:
1.8"H x 10.5"W x 15.0"D

FORM FACTOR HIGHLIGHTS

Compact, single-slot chassis supports standard Dell PowerEdge compute sleds.

High-performance computing platform built specifically for edge environments.

Size and weight make it ideal for 'carry with' (backpackable) or 'carry on' (Airline Transportation Associate compliant) applications.

Part of a family of platforms that extend what's possible with Dell PowerEdge XR4000-based products. Additional platform designs are available.

The Tracewell T-XR4000-1P (single slot 'mini' chassis) Specifications Summary

The Tracewell T-XR4000-1P (single slot 'mini' chassis) accepts standard Dell hardware configurations.

STANDARD DELL POWEREDGE XR4000 PRODUCT CONFIGURATIONS

PROCESSOR TYPE	Dell XR4510c (1U): 3rd Generation Intel Xeon D Scalable processor.
MEMORY ARCHITECTURE	Dell XR4510c: 4 DDR4 DIMM slots, supports up to 3200 MT/s RDIMM / LRDIMM, 512GB Max DDR4.
STORAGE	Dell XR4510c (1U): Supports Boot Optimized Storage Subsystem (BOSS-N1); 2x M.2 SSDs as an internal boot, supports up to 4x M.2 SSDs (M.2 2280 and M.2 22110) installed on M.2 riser module.
RAID CONTROLLER	None supported.
VIDEO	Dell XR4510c: Integrated Matrox G2000 graphics controller embedded in the iDRAC (BMC) chip with 16 MB of video frame buffer.
PCIe SLOTS	None supported.
NETWORK	Dell XR4510c (1U): 4x 10GbE or 4x 25 GbE LOM, 1x 1GbE management port.
SYSTEM MANAGEMENT	Dell XR4510c: Supports one RJ45 with port status LEDs for iDRAC remote management (dedicated port only).
ACCESSIBLE I/O	Dell XR4510c (1U): One nine-pin USB 3.0 port to connect USB devices. 4x 10Gbe (max 50Gb). 4x 25Gbe (max 100Gb). 2x USB 3.0 1x Micro-AB USB 2.0-compliant port for iDRAC Direct. 1x Micro-USB UART port. One mini display port to connect a display device. One RJ-45 iDRAC remote management (dedicated port only). 1x USB 3.0 (internal). Power On Button, front of chassis.

The Tracewell T-XR4000-1P (single slot 'mini' chassis) Specifications Summary

The Tracewell T-XR4000-1P (single slot 'mini' chassis) accepts standard Dell hardware configurations.

POWER SUPPLY	<p>One power supply supported. Available in 1800W, 1400W, 1100W Mixed Mode AC, or 1100W DC.</p> <p>High-line AC operation up to 1800W or 1400W (1800W and 1400W).</p> <p>Low-line AC operation up to 1050W (1400W).</p> <p>DC operation up to 1100W (1100W DC).</p> <p>Input voltage: 100-240 VAC, -48 (-60) VDC, Maximum inrush current: 6.6 to 12 A (AC), 27 A (DC).</p>
COOLING	Dell XR4510c (1U): 3 standard cable fans per node
ENVIRONMENTAL	<p>Normal operating temp: -5°C to 55°C with startup of 0°C (23°F to 131°F) with some restrictions.</p> <p>Storage temp: -40°C to 85°C (-40°F to 185°F).</p>

Tracewell Systems Product Configurations

CHASSIS CONSTRUCTION	High-strength, aluminum low-mass chassis for rigidity with minimum weight.
CHASSIS SLED SLOTS	Tracewell T-XR4000-1P: Removable Dell compute sled ("pluggable"): System supports (1) Dell XR4510c.
DIMENSIONS	T-XR4000-1P: 15.0"L x 10.5"W x 1.8"H (1U+). Weight: approximately 10.0 lbs.
INSTALLATION AND OPTIONS	<p>Designed for benchtop operation.</p> <p>System includes threaded hard points to support various mounting options.</p> <p>Compact Airline Transportation Association (ATA) compliant transport case (optional).</p>

Above specifications are derived from the standard Dell XR4000 product.

ABOUT TRACEWELL SYSTEMS

For five decades Tracewell has enabled the nation's largest military and commercial organizations to deliver powerful and reliable computing solutions in environments where size, weight, power and other constraints present challenges that cannot be met by standard computing systems. Tracewell Systems have been recognized by the top names in the defense and technology sectors for their commitment to Trusted Innovation – a process where the company solves previously impossible, sensitive, mission-critical platform challenges through customer solution design, engineering and manufacturing, all under one roof. More information: www.tracewell.com.

©2024 Tracewell Systems, Inc.

Tracewell Systems, Inc. reserves the right to make changes without notice. All brand or product names may be trademarks or registered trademarks of their respective holders.

July 2024 | Version 2.0 Tracewell T-XR4000-1P (single slot "mini" chassis) Product At A Glance