



## **E-Tool Mobile Manager 8 Drawer - Rugged Managed**

Part # 563-2000-F01-00

Part # 563-2000-F02-00

Part # 563-2000-F20-00

Publication # 095-2025-000-00 Rev. 0



# Tracewell Systems

## Table of Contents

<b>Cabinet Description .....</b>	<b>3</b>
<b>Rear Cabinet Connections .....</b>	<b>4</b>
<b>Drawer Connections .....</b>	<b>5</b>
<b>Rear View with the Cover on .....</b>	<b>6</b>
<b>Rear View with the Fan Cover opened .....</b>	<b>7</b>
<b>Rear View with the Switch Cover removed .....</b>	<b>8-9</b>
<b>Preventive Maintenance .....</b>	<b>10</b>
<b>Ethernet Switch Specification .....</b>	<b>11</b>
<b>Parts List .....</b>	<b>12</b>
<b>Dimensions .....</b>	<b>13-14</b>
<b>Warranty .....</b>	<b>15</b>

# Chassis Description

## General Specification

- 8 drawers accommodate 8 notebook computers, 1 per drawer.
  - Each drawer has a 120 VAC outlet and 1, RJ45 Ethernet connection.
  - Drawers provide full extension for ease of installing computer chargers and computers.
  - Drawers are vented to allow warm air to escape.
  - Each drawer has a high-security lock.
- Power surge protection is provided to protect all the laptops from voltage spikes.
- The unit has a durable finish.
- The F01 version is equipped with a Cisco Ethernet Switch, allowing a single connection to your server.
- The F02 version is equipped with a Juniper Ethernet Switch for a lower cost system.
- The F20 version has no Ethernet Switch installed, but is fully wired and tested so the user can install a switch.
- 3 External Ethernet ports. One port directly to the Ethernet switch, the second Ethernet port will allow for daisy chaining the units, and the third is used as a console port for the managed switch.
- A Single power cord provides power to all the drawers and plugs directly into a standard 120VAC, 50-60Hz wall outlet.
- Fans are provided to insure sufficient cooling while charging.

## Construction Material

- Lightweight aluminum.

## Cabinet Maximum Dimensions

- F01: Depth – 25.0", Width - 21.7", Height 61.4" (with casters)
- F02: Depth – 25.0", Width - 21.7", Height 61.4" (with casters)
- F20: Depth – 25.0", Width - 21.7", Height 59.8" (with casters)
- Without castors: Subtract 5.2" from height

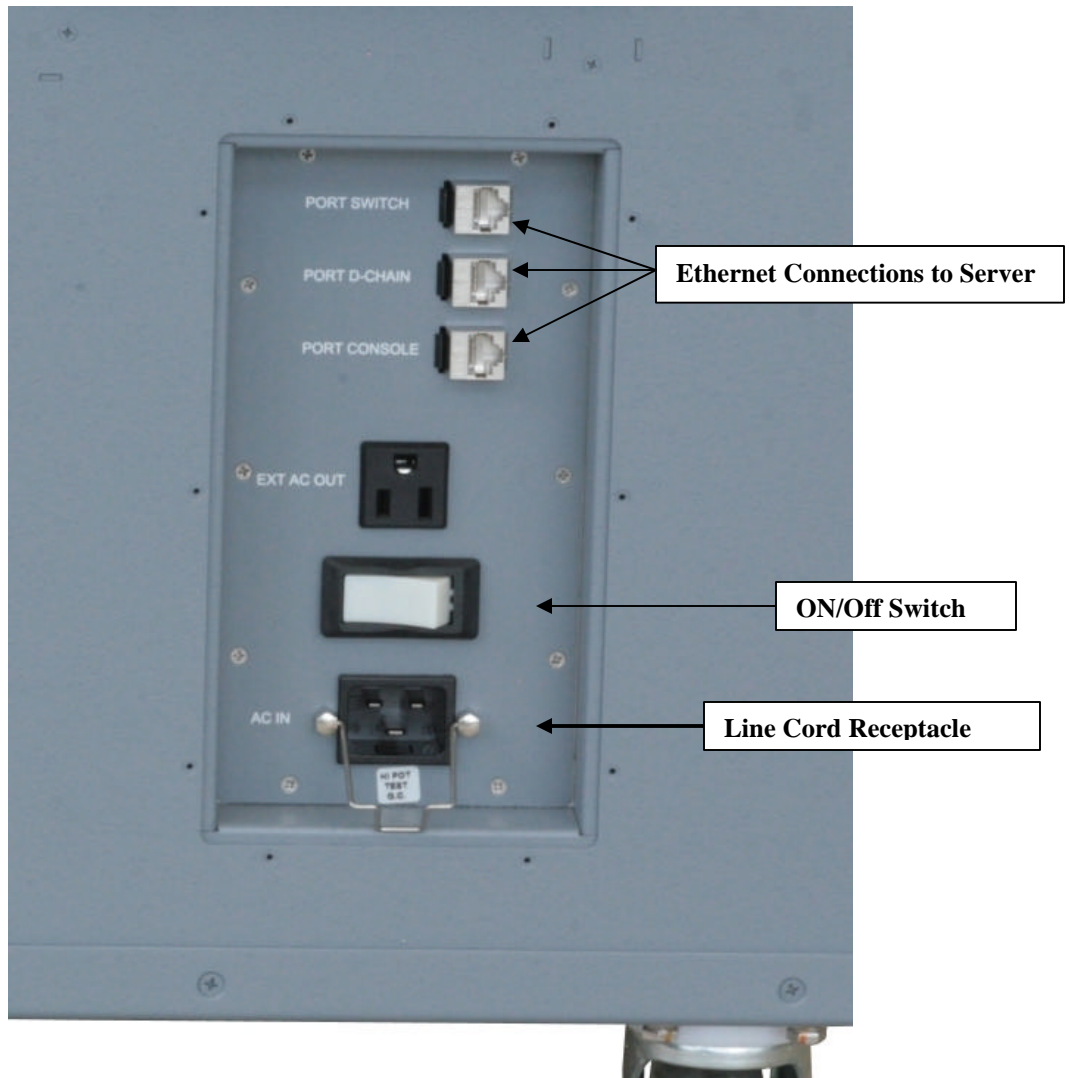
## Drawer Dimensions

- Depth -17.75", Width – 17.2", Height – 6.00"

## Weight

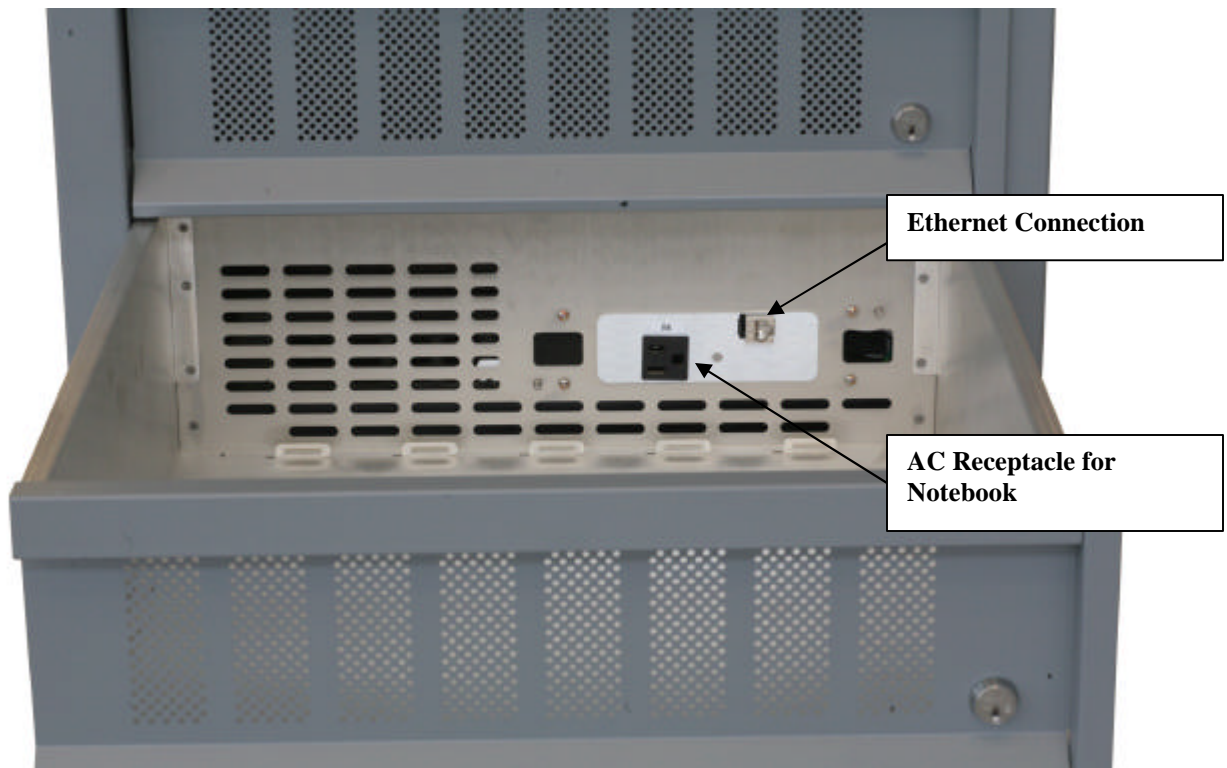
- 160 lbs. (Without Notebooks)

## Cabinet Rear Connections



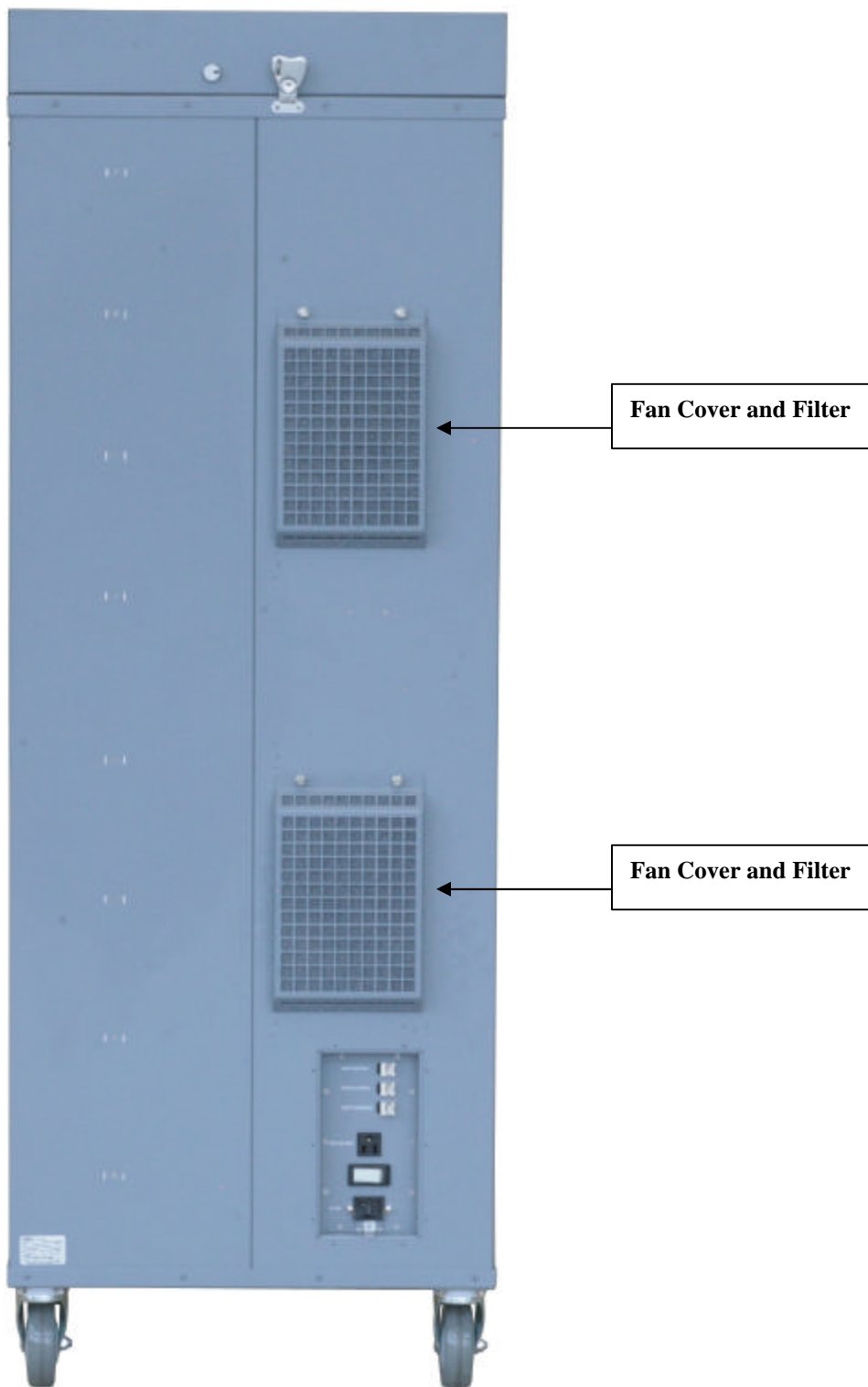
## Drawer Connections

(Caution! Open Only 1 Drawer at a Time)



## Rear View (F01 shown)

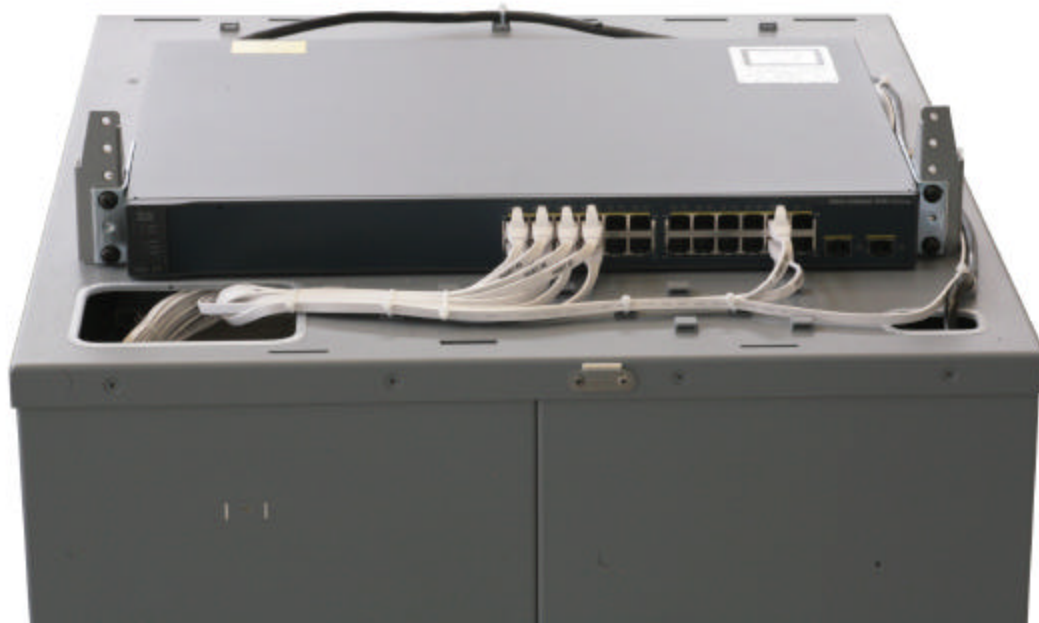
(Caution! Unplug Unit Before Removing Cover)



## Rear View with Fan Filter Cover Opened

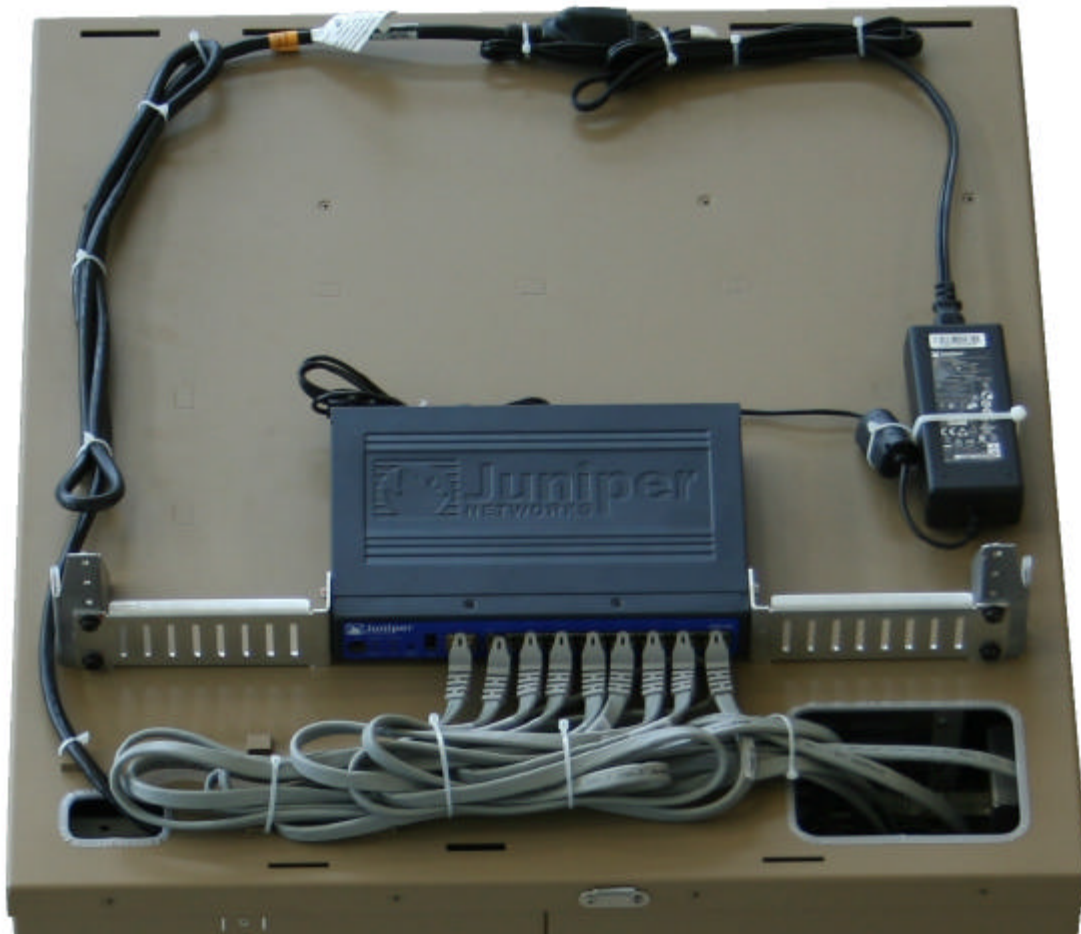


**Top Views with Network Switch Cover Removed  
(F01 version, Cisco 3560)**





## Top View with Network Switch Cover Removed (F02 version, Juniper SRX 100)



## **Preventive Maintenance**

**(Caution! Unplug Unit Before Removing Rear Cover)**

### **Schedule**

The cabinet is designed for years of reliable operation with minimal upkeep. To maintain sufficient cooling air flow through the drawers, the air intake filters must be kept clean. The filter material is reusable, and should be cleaned periodically.

The following are the maximum recommended intervals for typical installations. These intervals must be shortened in environments with significant airborne dust, pollen, etc.

Filter inspection: Monthly

Filter removal and cleaning: 6 Months

### **Procedure**

Tools: none.

1. Turn off the cabinet and remove the AC power cord.
2. Locate the fan cover on the rear panel (page 7).
3. Loosen two (2) thumbscrews at the top of the fan cover.
4. Open the fan cover as shown on page 8.
5. Remove the filter material, rinse out the trapped dirt with warm water.
6. Dry the material by pressing it between two paper towels.
7. Allow sufficient time for the filter material to dry completely.
8. Replace the filter material in the fan cover, close the cover, and tighten the two thumbscrews.
9. Attach the AC line cord and turn on the cabinet.

### **Drawer Slides**

The drawer slides can collect dirt over time and lose mobility. To correct this, apply a spray lubricant sparingly as needed.

Slides inspection: 6 months

Lubricant: Liquid Wrench White Lithium Grease, p/n L606, available at Lowes, Home Depot, etc.

## Ethernet Switch Specification (F01 version)

### Network Ports:

- 8, 10 or 100 Mbps RJ-45 ports
- 1 3G USB port

### Performance (64 byte packets):

- Store-and-forward packet switching
- Forward rate 700 Mbps
- MAC addresses unlimited
- Queue buffer 512 MB DRAM

### Weight:

- 1.2 kg (2.5 lb)

### Dimensions:

- W 216 mm (8.5")
- D 147 mm (5.8")
- H 36 mm (1.4")

### AC Power:

- 30 W maximum, 10 W average
- Auto-sensing 100 to 240V, 50/60 Hz
- Localized plug for North America, Japan, UK, Europe, Australia

### Standards Compliance:

- IEEE 802.3i 10BASE-T Ethernet
- IEEE 802.3u 100BASE-TX Fast Ethernet
- Compatible with all major network software

### Status LEDs:

#### Unit:

- system, RPS, link status, link, duplex, link speed
- Per network port :10 or 100 Mbps operations, Rx/Tx and collision, link, half/full duplex

### Electromagnetic Emissions:

CE mark, commercial

FCC Part 15 Class B

EN 55 022 (CISPR 22), Class B

GOST

CNS13438 Class B

MIC

### Environmental Specifications:

#### Operating temperature:

- 0°C to +40°C

#### Operating humidity:

- 90% max. relative humidity, non-condensing

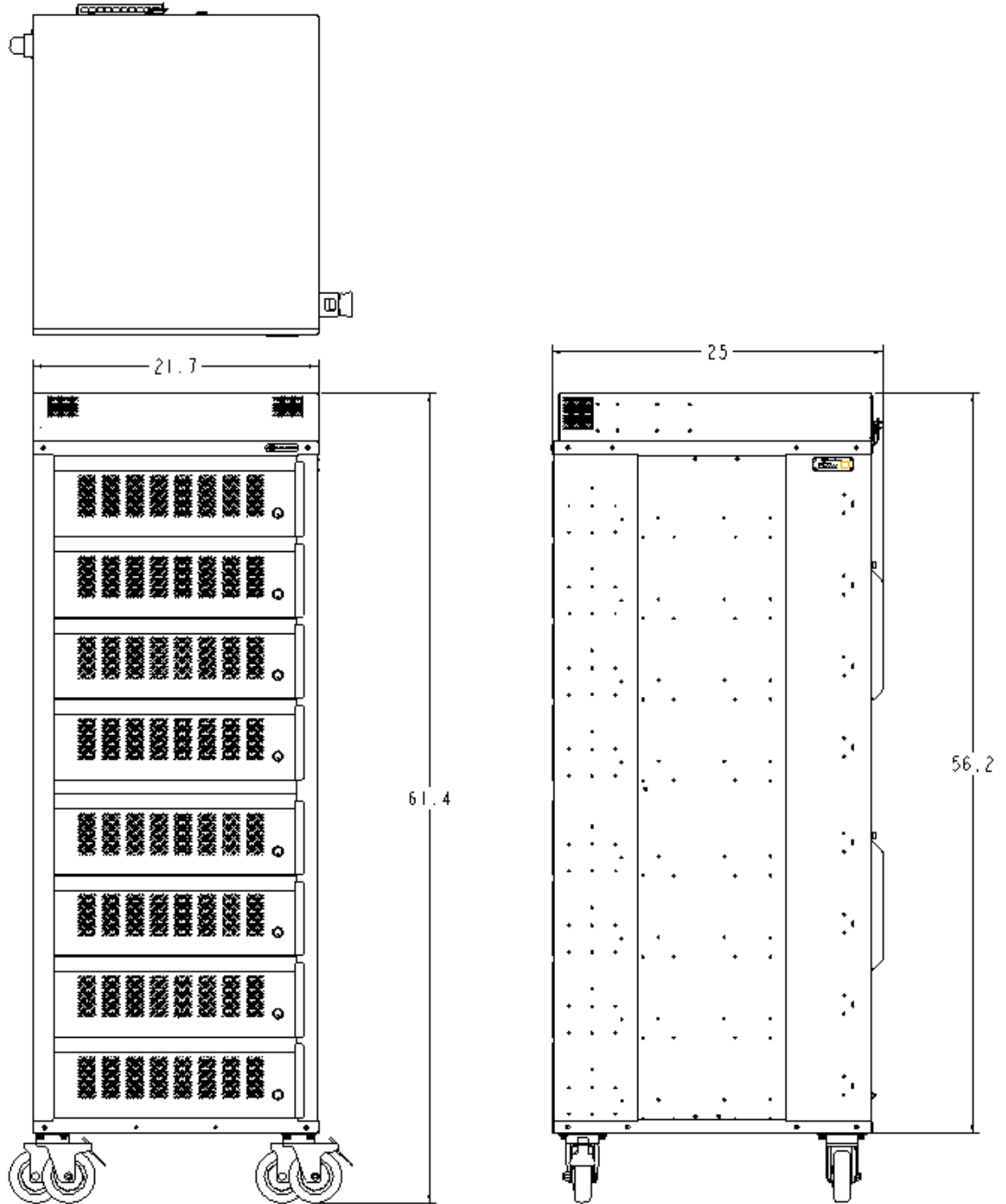
### Safety Agency Approvals:

- UL listed 60950-1, First Edition
- TUV licensed EN60950-1

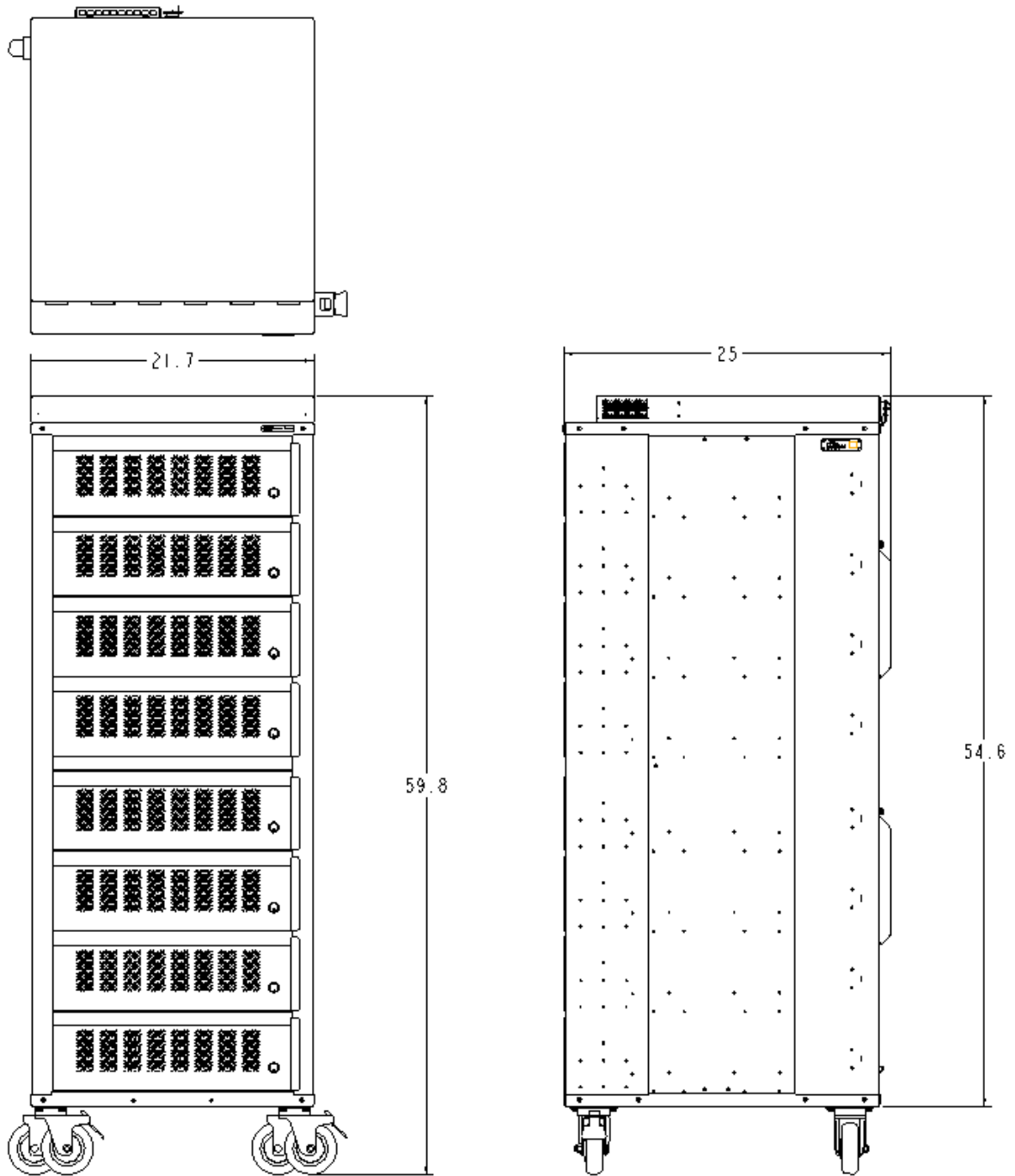
## Parts List

<b>Part Description</b>	<b>Part Number</b>
Caster, 4", swivel, with lock	015-2063-000-0P
Caster , 4", fixed with lock	015-2064-000-0P
Line Cord, AC, black, 15 amp.	023-9022-000-0P
Switch, 24 Port, 10/100, Cisco 3560	076-0204-000-0P
Switch, 8 Port, 10/100, Juniper SRX 100	076-0205-000-0P
Fan Assembly	163-0046-000-0C
Fan Filter Material	015-2364-000-0P

## Dimensions – F01 version



## Dimensions – F20 version



## Limited Warranty

The EMMC is warranted for a period of 1 year from the ship date against electrical defects in workmanship and component failure, and 3 years for mechanical defects in workmanship or component failure. For a list of Field Replaceable Parts (FRP's), see page 11.

**For replacement parts contact Tracewell Systems Repair Center.**

**Please have the serial number of the EMMC and the address of where you would like the replacement parts shipped before you call.**

Replacement parts will be shipped from our plant within two working days and failed parts should be returned to Tracewell Systems Repair Center, 567 Enterprise Dr., Westerville, OH 43081 using the carton and packing material the replacement parts are shipped in.

An RMA (Return Material Authorization) number will be given to you when you call as well as a specified shipping method.

( Extended warranties are available, please contact the factory for specifics.)

### **Service:**

For warranty and non-warranty service, contact

Tracewell Systems Repair Center at: **1-614-846-6175**

**Fax us at 1-614-846-4450**, or contact us via the web at [www.tracewell.com](http://www.tracewell.com) .